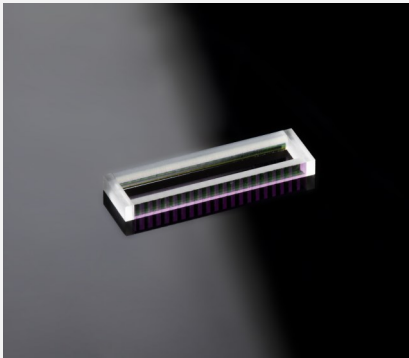


# FAC-SACA Collimation Module

## FAC910 with SACA for ES100/P500



### Features and Advantages

Collimation module consisting of FAC910 and SACA 100-500 mounted with side tabs for the collimation of the fast and slow axis of diode lasers. Emitter size of up to 100  $\mu\text{m}$  and emitter pitch 500  $\mu\text{m}$ .

\* Product similar to image, see product drawing below.

### Product Specifications

Specification Data	Unit	Value
Material		S-TIH53 (Ohara)
Length (L)	mm	11.5 $\pm$ 0.25
Width (W)	mm	1.5 $\pm$ 0.05
Thickness (T)	mm	3.71 $\pm$ 0.05
Clear aperture	mm <sup>2</sup>	9.5 x 1.34
Back focal length BFL @ 808 nm	mm	0.09
Pitch	mm	0.5
Fast axis power within an angle of $\pm$ 0.7 mrad <sup>(1)</sup>	%	> 85
Transmission	%	> 98

**Product Code** **MOD000631**<sup>(2)</sup>

Specification Data <sup>(2)</sup>	Unit	Value
AR-coating	nm	790 - 990
Remaining divergence (FW1/e <sup>2</sup> ) for slow axis	mrad	40 (typically)

<sup>(1)</sup> Valid for an emitter-height of 1  $\mu\text{m}$  and no smile of the laser diode.

<sup>(2)</sup> Example for customization – customized coating and bottom tab for mounting on request.

### Product Dimensions (mm)

